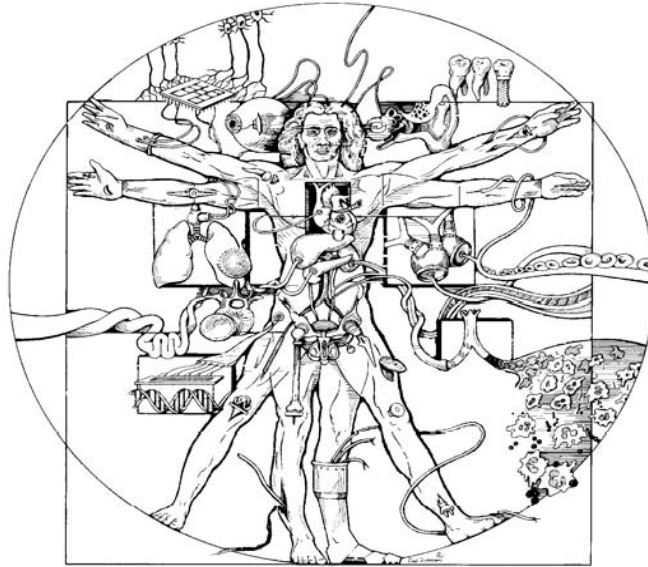


# Biomedical Engineering Seminar



**Joelle Sarlls, Ph.D.**

National Institutes of Health

National Institute of Child Health and Human Development

Section of Biophysics and Biomimetics

**“NATIONAL INSTITUTES OF HEALTH:  
Perspective of a 2<sup>ND</sup> Year Post-doc”**

Abstract: The National Institutes of Health (NIH) is a very unique place to carry out a post-doc. The current mission of the NIH is “To uncover new knowledge that will lead to better health for everyone.” In this charge, there are numerous opportunities for growth, from gaining technical skills to learning a new language. At the NIH, one is at the forefront of discovery in clinically focused research. There are various opportunities for collaboration with experts in many medical fields, as well as industrial professionals. The NIH is a research only institution, which makes the post-doc experience distinct from that of an academic institution. Furthermore, the NIH is a government agency, which also makes the experience distinctive. I will discuss some of the advantages and disadvantages in working at this kind of institution. Transitioning from graduate student to post-doc is a significant change. I will share my experiences as an Intramural Research Training Award (IRTA) post-doctoral fellow and pearls of wisdom for selecting a post-doc position, as well as making a smooth transition to the next level. Throughout the presentation, I will highlight my research contributions to the Section on Tissue Biophysics and Biomimetics, along with some of our future directions.

**Monday, April 21, 2008**

**2:00 pm**

**Keating/Bio 5 103**

Host: Jennifer Barton, Ph.D. (621-4116)

Persons with a disability may request a reasonable accommodation by contacting the Disability Resource Center at 621-3268 (V/TTY). Requests should be made as early as possible to allow time to arrange the accommodation