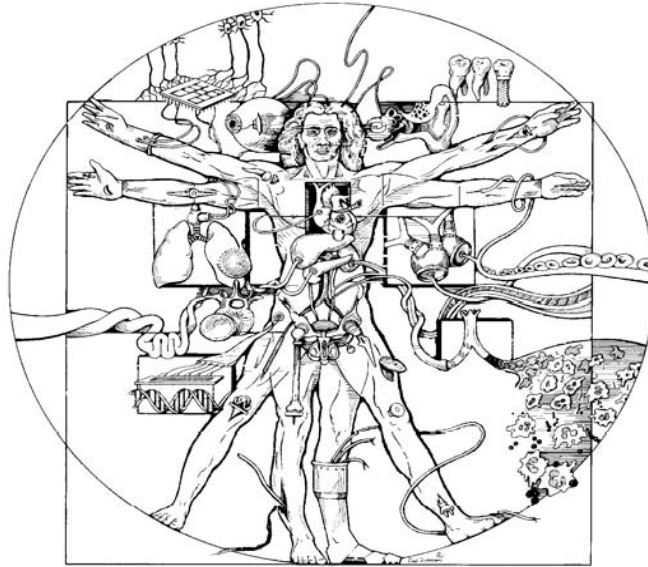


# Biomedical Engineering Seminar



**Alan Kehlet, Ph.D.**

Retired, NASA and Aerospace Industry Executive

## “Project Mercury: First Step to the Moon”

Abstract: Project Mercury was the United State’s first manned spacecraft program. While the experiences of the Mercury Astronauts and Flight Control have been well documented, little has been written about the Mercury Engineers. Their efforts produced this innovative earth-orbital spacecraft and made the Astronauts heroes.

This presentation will describe the creation of the National Aeronautics and Space Administration (NASA) and the formation of the NASA Space Task Group (STG). The STG’s role was to *conceive, develop and manage a program to place a man in earth orbit and return him safely to earth*. The preliminary and final designs of the Mercury Capsule will be covered, as well as the successes and failures of the ground and flight tests. Also discussed will be the interactions between NASA and the Aerospace Industry, mission objectives results, and Project Mercury Program “lessons learned” which were applied to the future Project Gemini and Project Apollo Programs.

About the speaker: Dr. Alan Kehlet is one of the original 35 members that formed the NASA Space Task Group and is a patent holder of the Mercury Capsule design. Dr. Kehlet has been directly involved in all of the NASA manned space programs. He was North American Aviation’s Spacecraft Manager of Apollo 11, the first lunar landing mission, and was for four years the Program Chief Engineer of the NASA Space Shuttle. Other programs in Dr. Kehlet’s career included industry executive positions in General Aviation, Tomahawk cruise missiles, the Delta Launch Vehicle and commercial transport aircraft advanced technology.

**Tuesday, April 21st, 2009**

**1:00 pm**

**Keating/Bio 5 103**

Host: Jennifer Barton, Ph.D. (621-4116)

Persons with a disability may request a reasonable accommodation by contacting the Disability Resource Center at 621-3268 (V/TTY). Requests should be made as early as possible to allow time to arrange the accommodation.