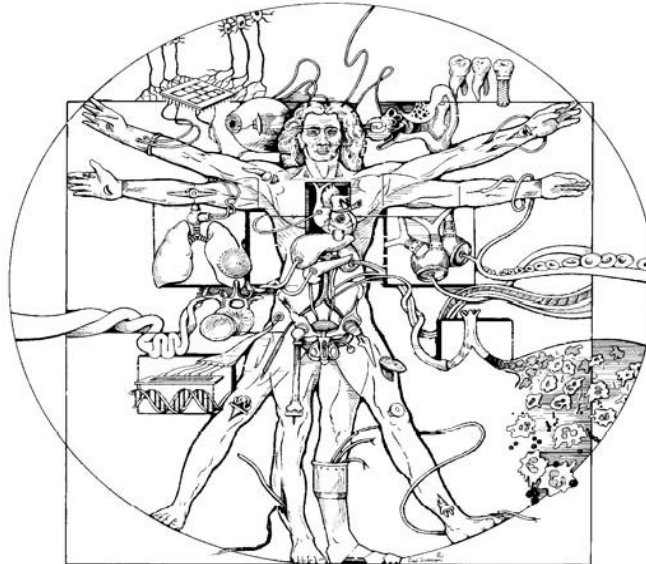


Biomedical Engineering Seminar



Kristen O'Halloran Cardinal, Ph.D.

Assistant Professor, Biomedical Engineering
Cal Poly, San Luis Obispo

“Harder than you can imagine, but more fun than you think:
The transition to life as an Assistant Professor”

Abstract: Kristen O'Halloran Cardinal completed her Ph.D. in Biomedical Engineering at the University of Arizona in May 2007. Her dissertation research with Dr. Stu Williams focused on developing and using tissue engineered blood vessels for preclinical device testing. As she neared the completion of her Ph.D., she still had not settled on the question of which direction was best: academia vs. industry, so she applied to both. After considering several offers, she chose to accept an Assistant Professor position at Cal Poly, San Luis Obispo in Cal Poly's new Biomedical Engineering department. She is currently in her second year as an Assistant Professor, busily teaching classes and running her research lab. The focus of this talk will be on Kristen's specific path from a graduate student to an Assistant Professor, with an emphasis on the challenges and the excitement. She will talk about her work at Arizona and how/when the job search began. She will share stories from interviewing, receiving offers, and making the “big” decision, and she will also talk about preparing for the transition. Finally, Kristen will talk about her day-to-day life at Cal Poly in the classroom and the research lab- including putting together lesson plans, late night grading, setting up a research lab, working with undergraduate and MS students, and the overall enjoyment of constantly drowning.

Monday, April 6th, 2009

2:00 pm

Keating/Bio 5 103

Host: Jennifer Barton, Ph.D. (621-4116)

Persons with a disability may request a reasonable accommodation by contacting the Disability Resource Center at 621-3268 (V/TTY). Requests should be made as early as possible to allow time to arrange the accommodation.